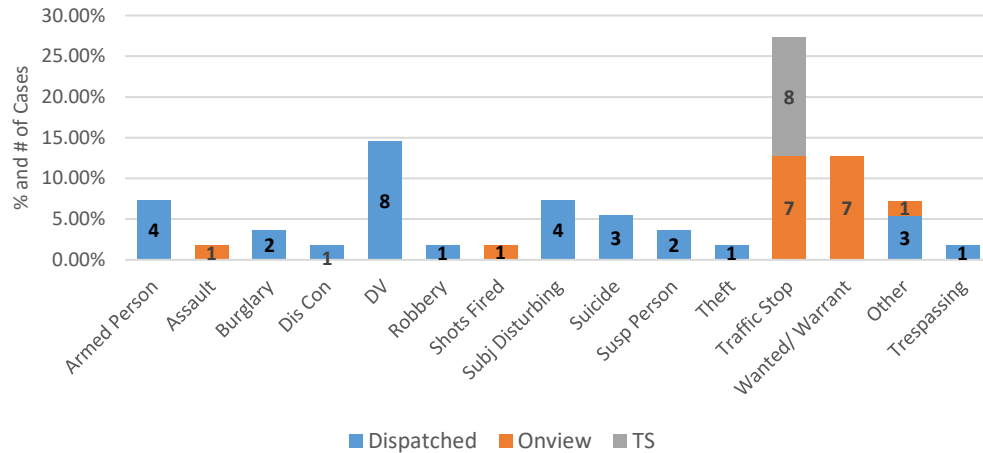


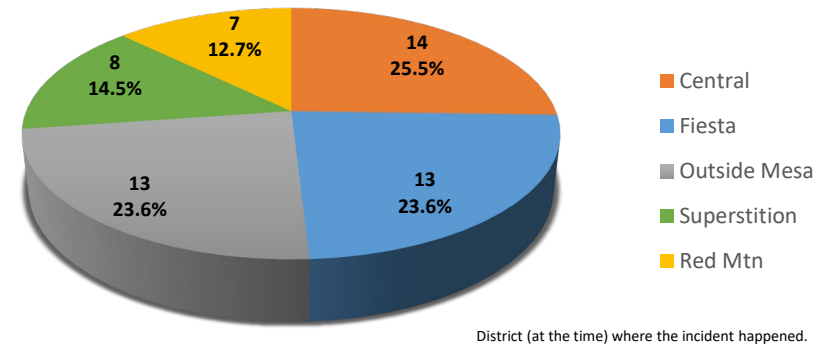


# MESA PD OIS EVENT DETAILS 2017 - 2022

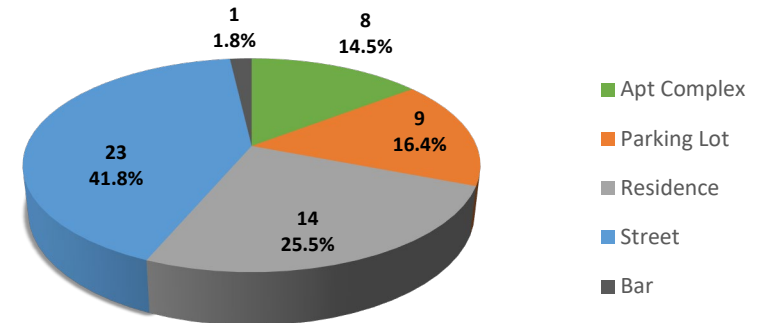
## INITIAL REASONS FOR PD RESPONSE



## CASES BY DISTRICT



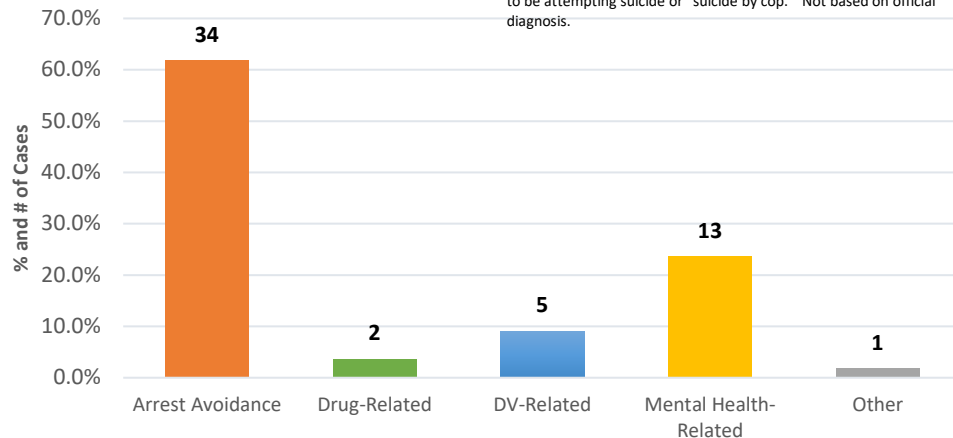
## LOCATION TYPES



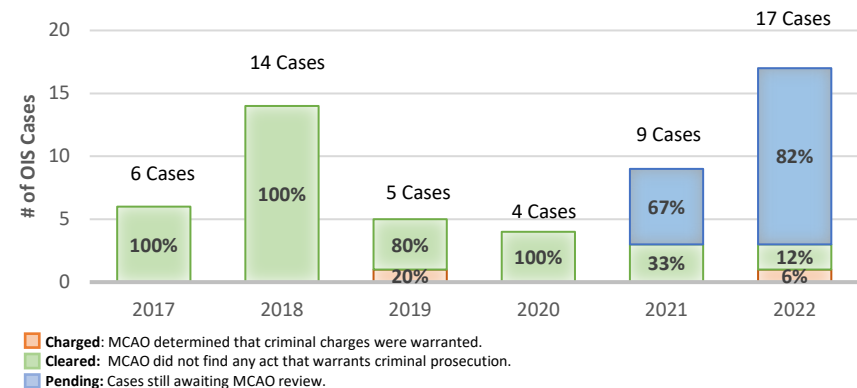
## CAUSATIONAL FACTORS

**Arrest Avoidance:** Subj attempted to flee arrest or initiated standoff.  
**Drug-Related:** Subj attempted to make some sort of drug transaction.

**DV-Related:** Subj involved in some sort of domestic/family offense.  
**Mental Health-Related:** Subj had history of mental health cfs or appeared to be attempting suicide or "suicide by cop." Not based on official diagnosis.

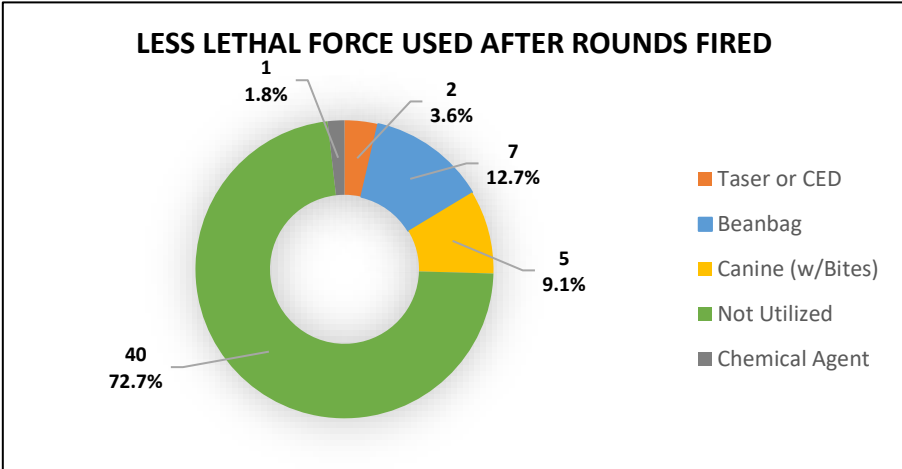
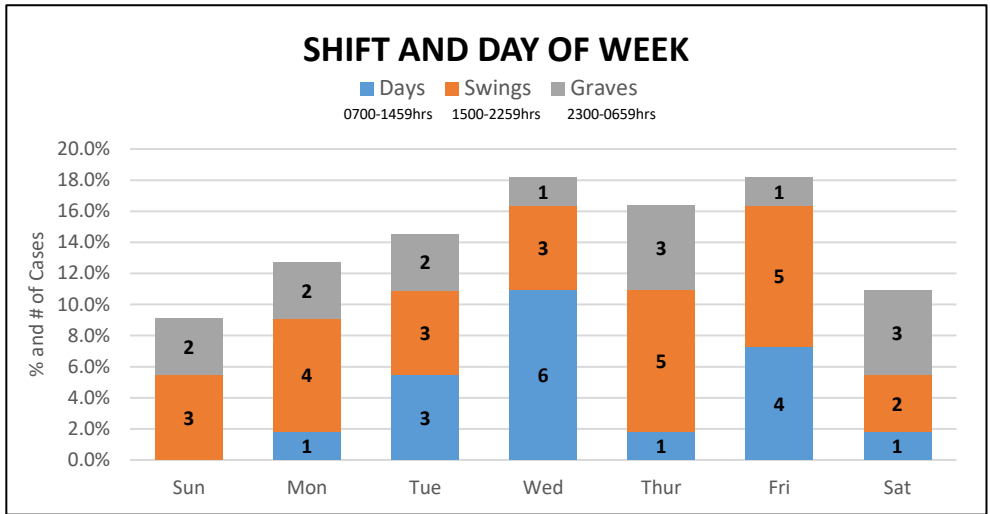
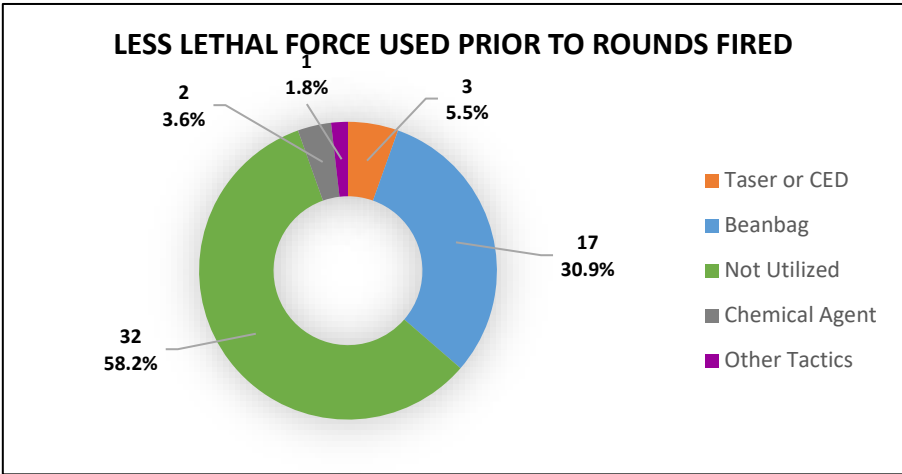
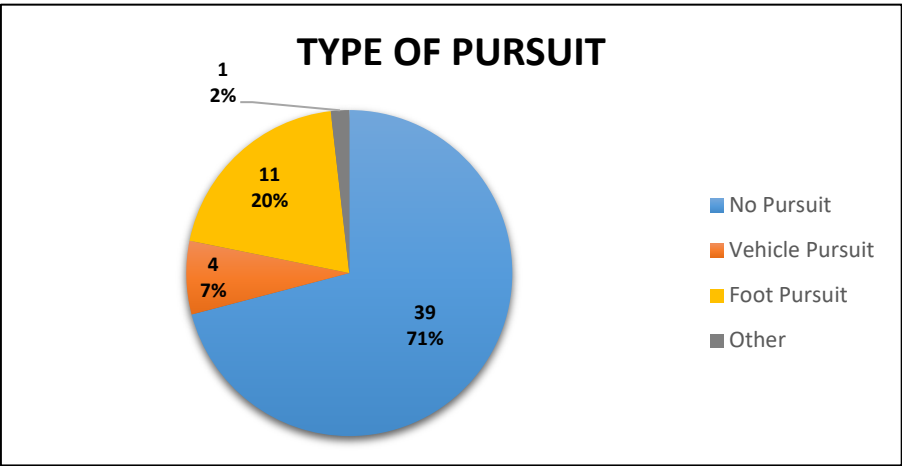
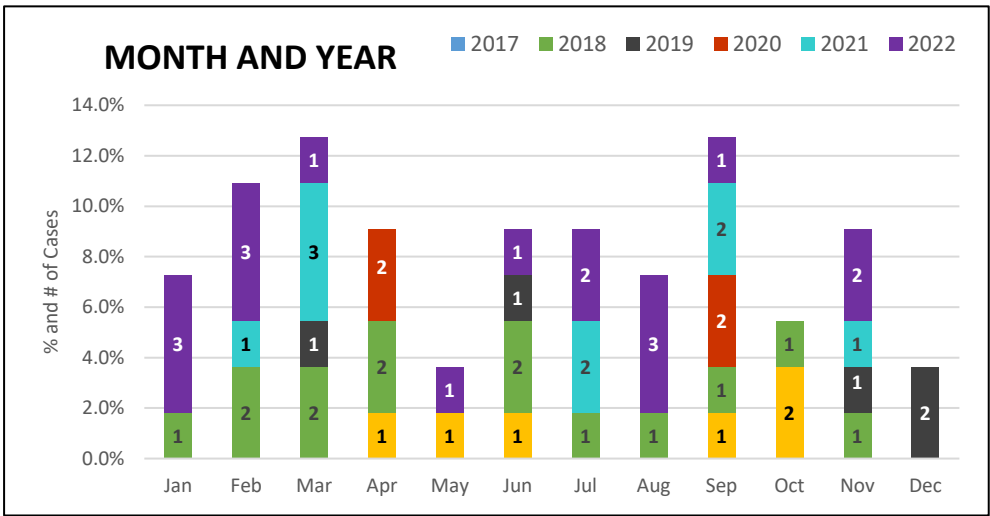


## MCAO CLEARANCES BY YEAR



1. Information updated when details become available and totals are subject to change.  
 2. Only cases where MPD officers fired are included. Some details may be unknown if the OIS happened outside of Mesa.

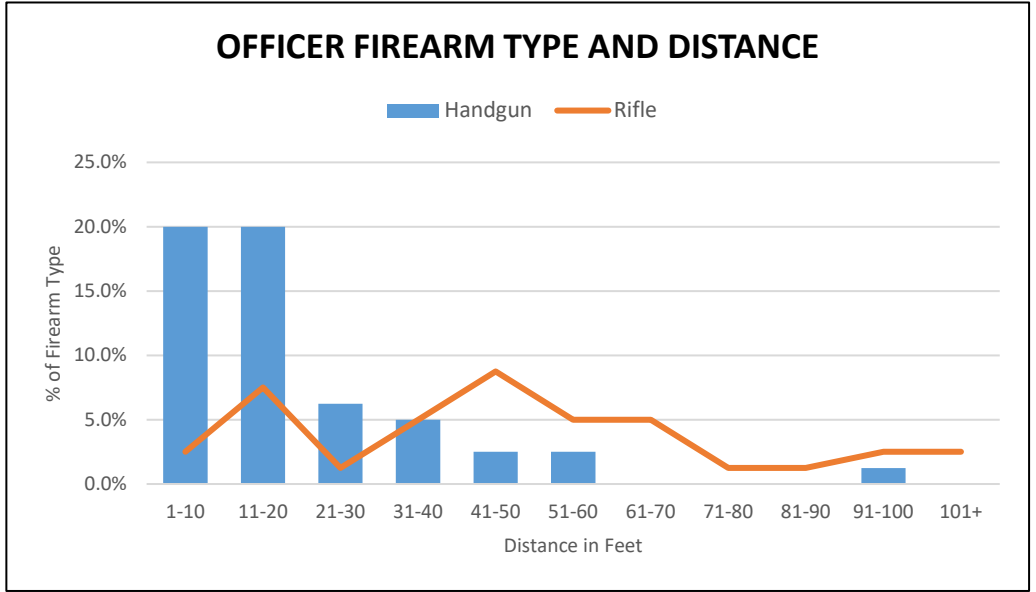
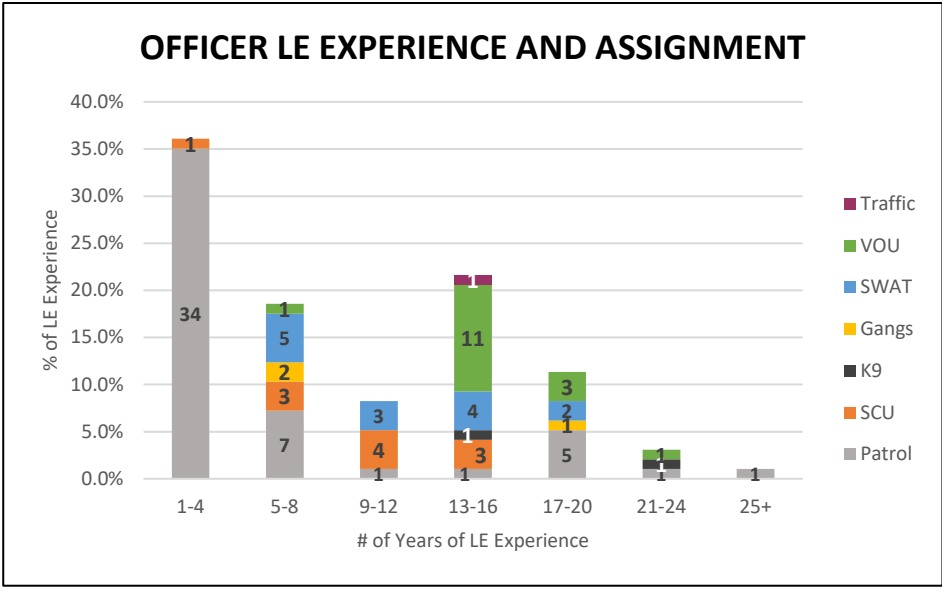
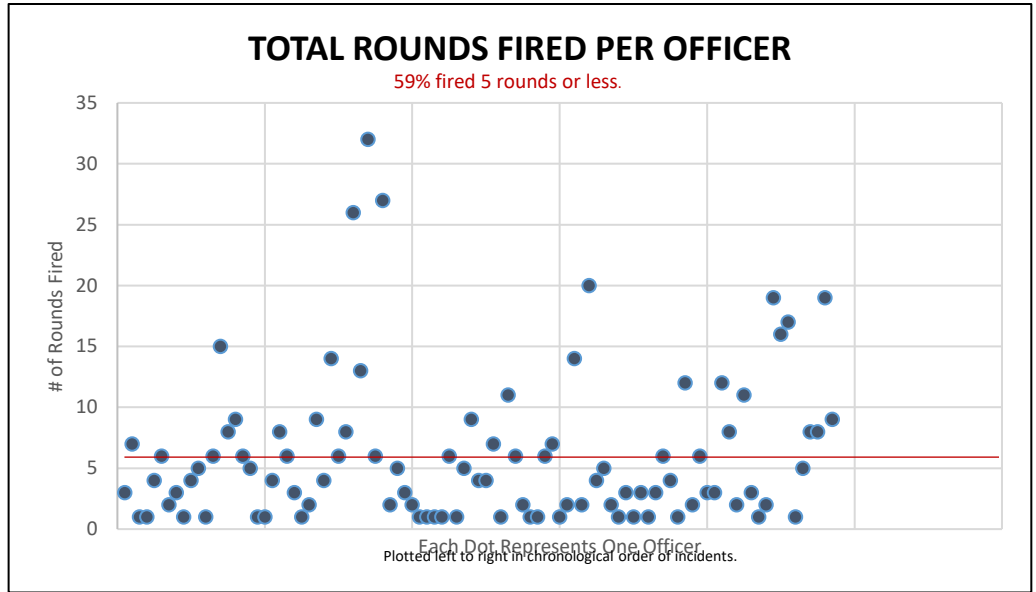
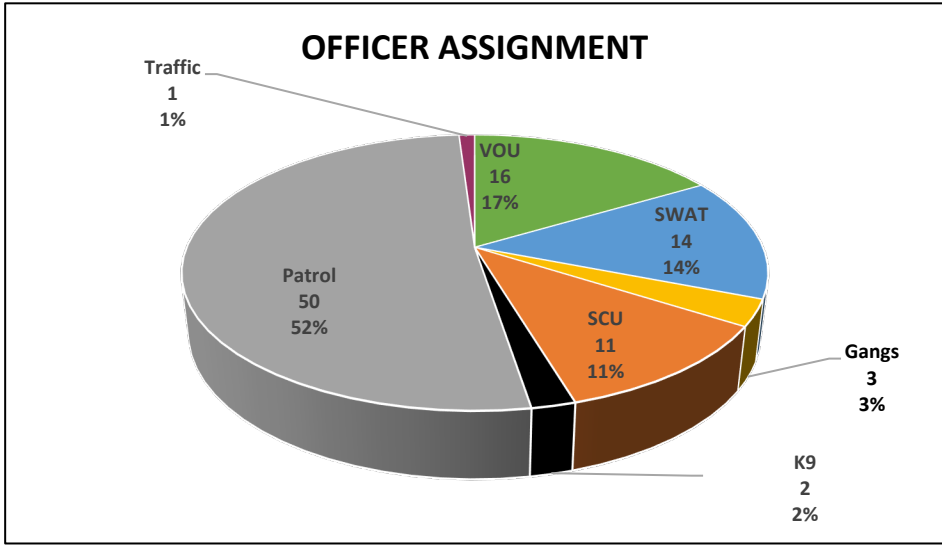
TOTAL # OF OIS CASES:	55
TOTAL # OF OFFICERS WHO DISCHARGED WEAPONS:	97
TOTAL # OF SUBJECTS FIRED UPON:	56



1. Information updated when details become available and totals are subject to change.  
 2. Only cases where MPD officers fired are included. Some details may be unknown if the OIS happened outside of Mesa.



# MESA PD OIS PEOPLE DETAILS 2017 - 2022



1. Information updated when details become available and totals are subject to change.  
 2. Only cases where MPD officers fired are included. Some details may be unknown if the OIS happened outside of Mesa.

### SUBJECT INJURY

INJURY	%
Death	53.57%
Injury	32.14%
Uninjured	14.29%
<b>TOTAL</b>	<b>100.00%</b>

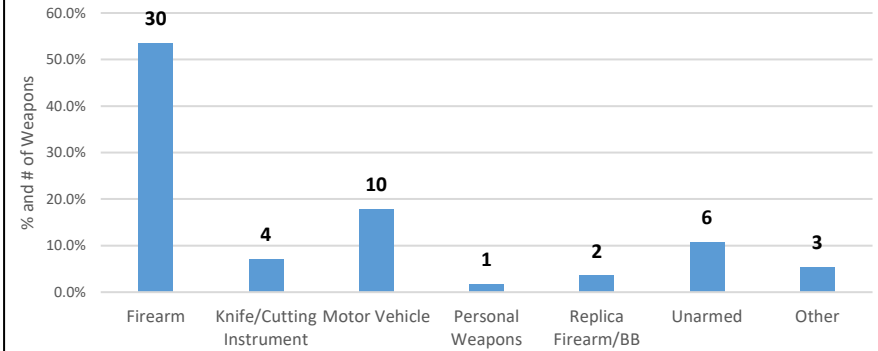
### MESA RESIDENT?

RESIDENT	%
No	34.00%
Yes	66.00%
<b>TOTAL</b>	<b>100.00%</b>

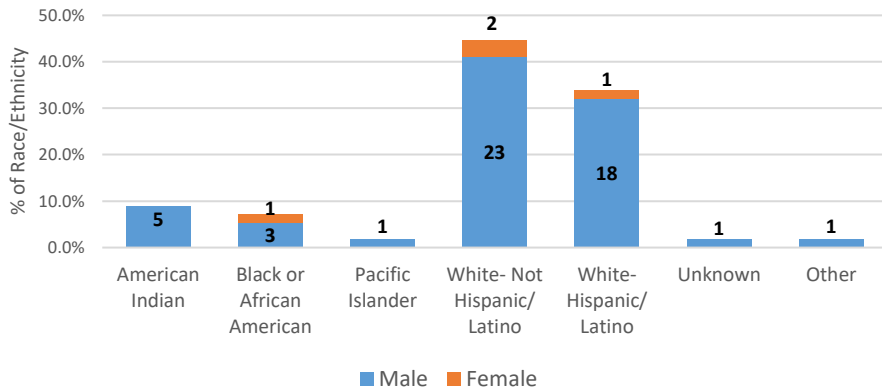
### CRIMINAL HISTORY

History	%
Felony - Other	18.37%
Felony - Violent	57.14%
Misdemeanor	18.37%
None	4.08%
Unk	2.04%
<b>Total</b>	<b>100.00%</b>

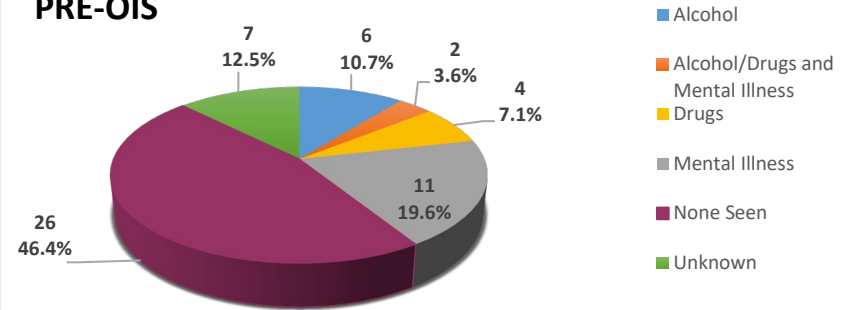
### SUBJECT USE OF WEAPON/FORCE



### SUBJECT DETAILS

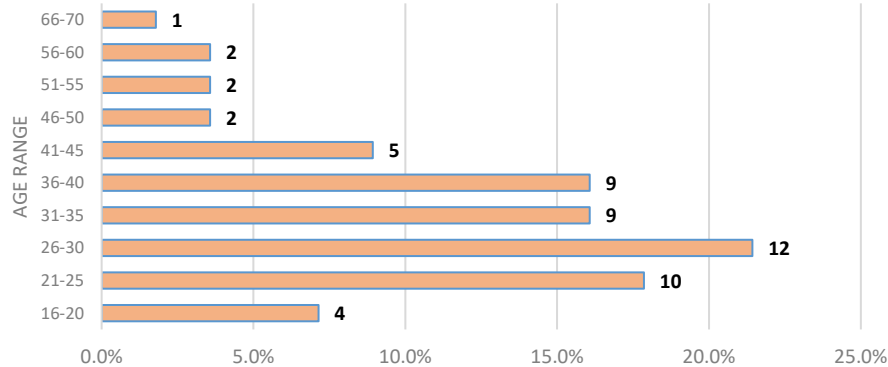


### APPEARANCE OF SUBJECT IMPAIRMENT PRE-OIS

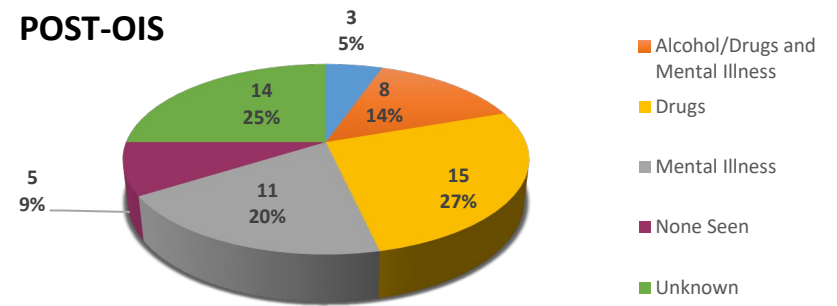


Impairment based on how subject appeared to officer(s) at time of incident, Not based on official diagnosis.

### SUBJECT AGE RANGE



### SUBJECT IMPAIRMENT DISCOVERED POST-OIS



Impairment due to drugs and/or alcohol based on actual lab test results (ie: OME report, hospital labs, etc). Impairment related to mental illness based on further investigation and interviews with subject or family after OIS. Not based on official diagnosis.

1. Information updated when details become available and totals are subject to change.  
 2. Only cases where MPD officers fired are included. Some details may be unknown if the OIS happened outside of Mesa.